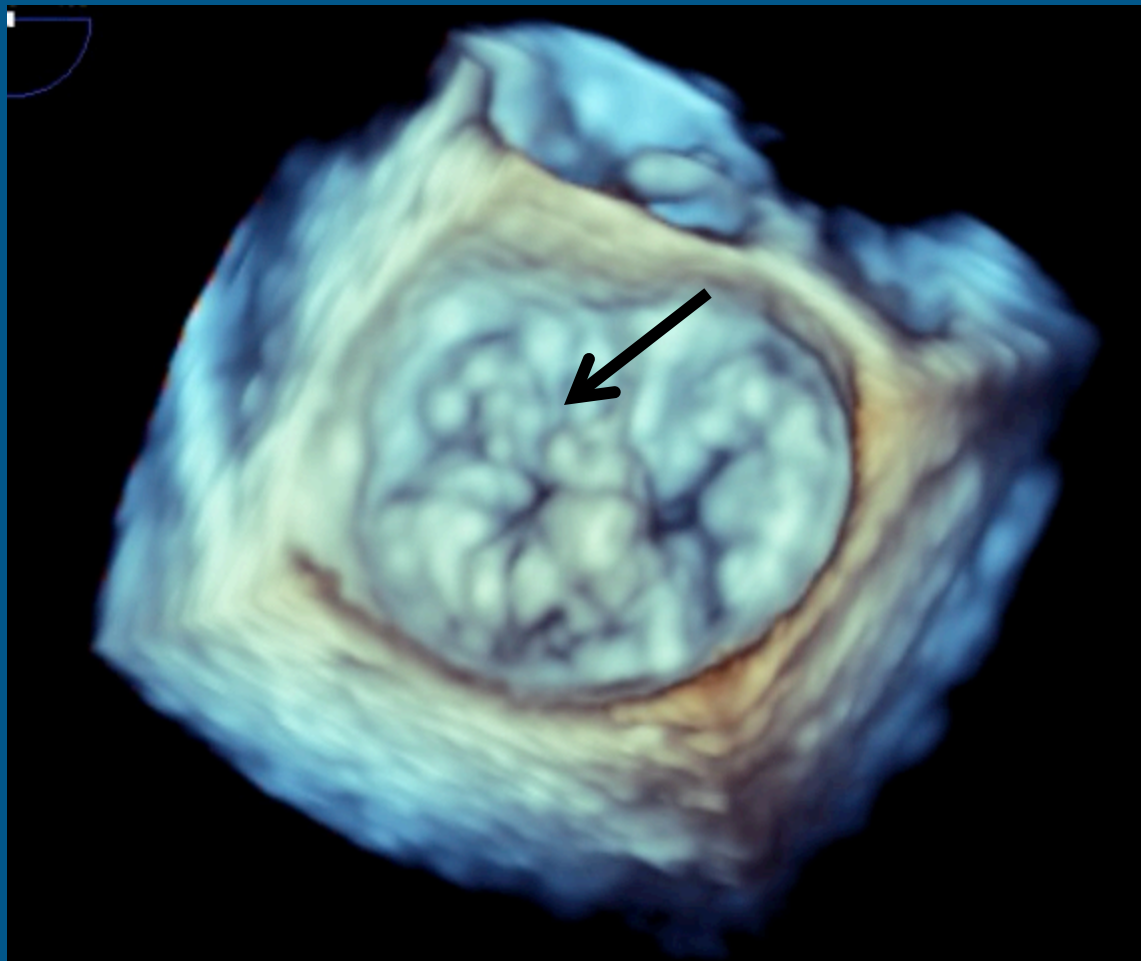
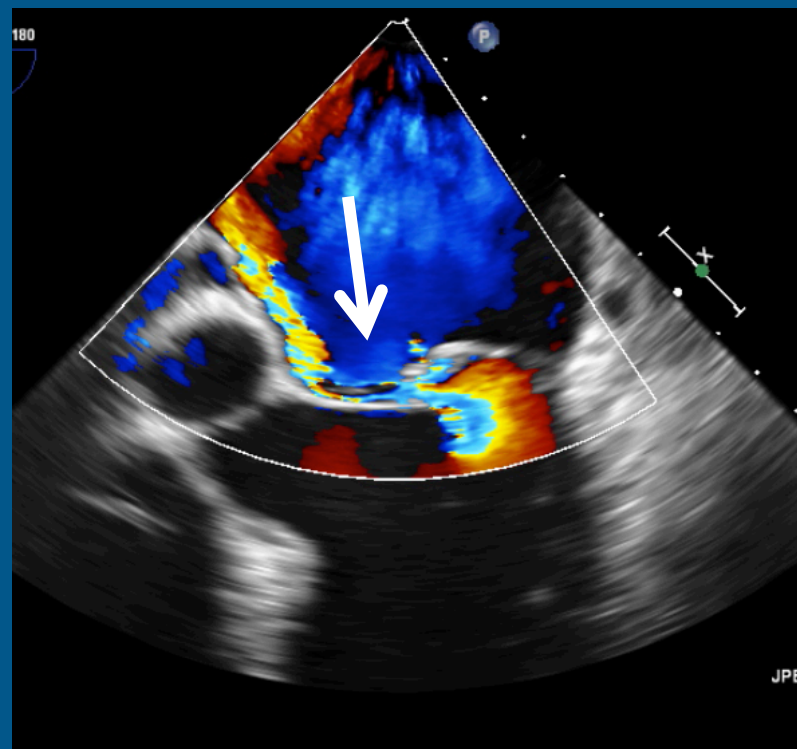
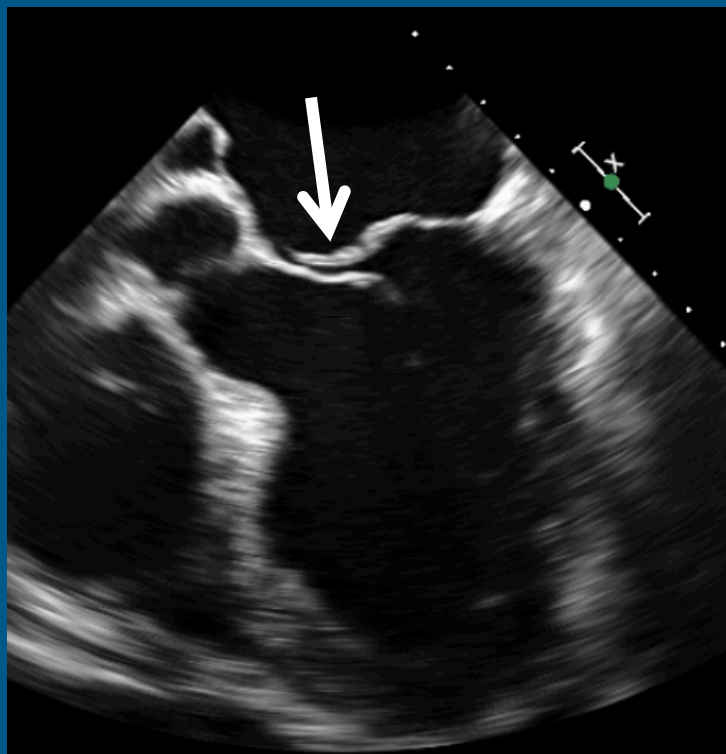


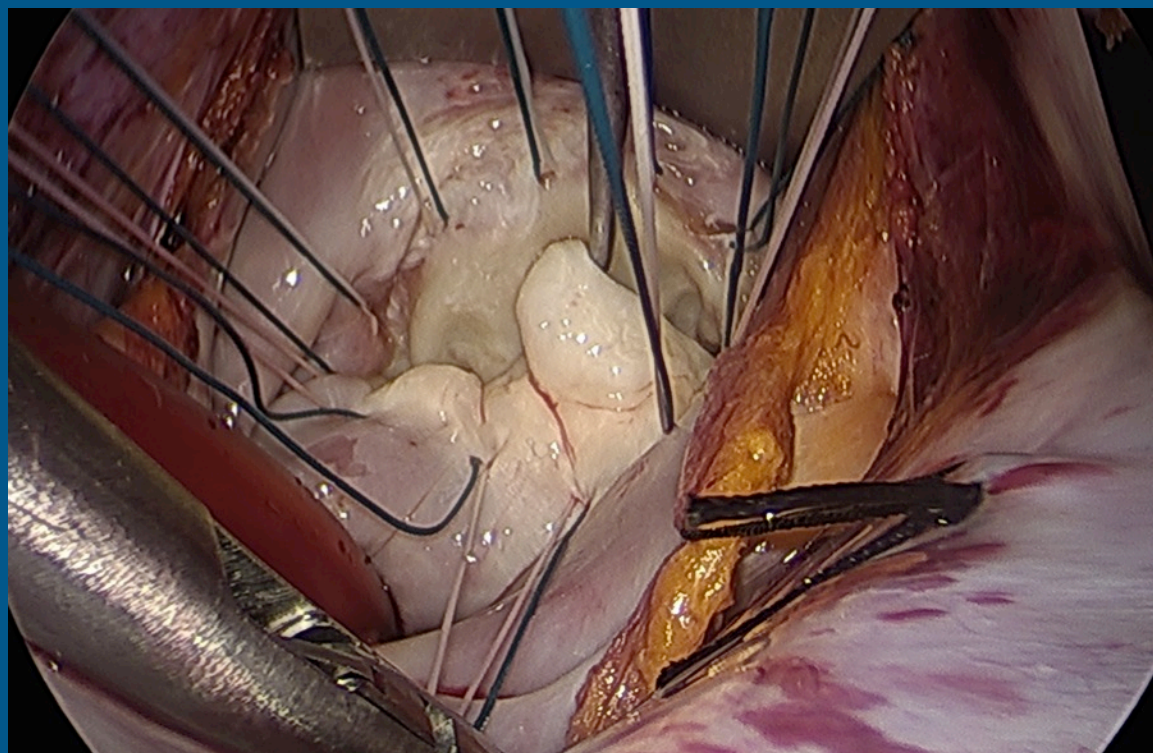
Preoperative 3D Echo Image Showing Flail (torn) Posterior Leaflet (indicated by arrow)



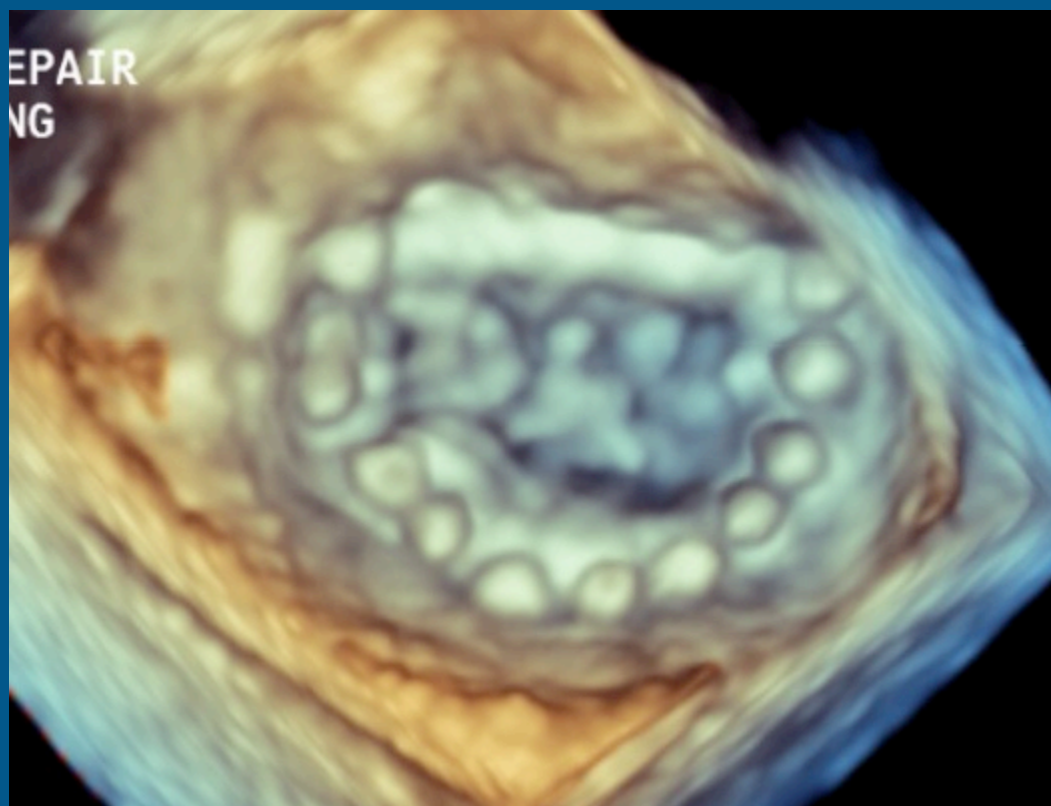
Preoperative Echo of Posterior Leaflet Flail (Torn leaflet indicated by arrow with color flow into left atrium)



**View From Minimally Invasive
Incision of Mitral Valve
Showing Flail (torn) Posterior Leaflet**

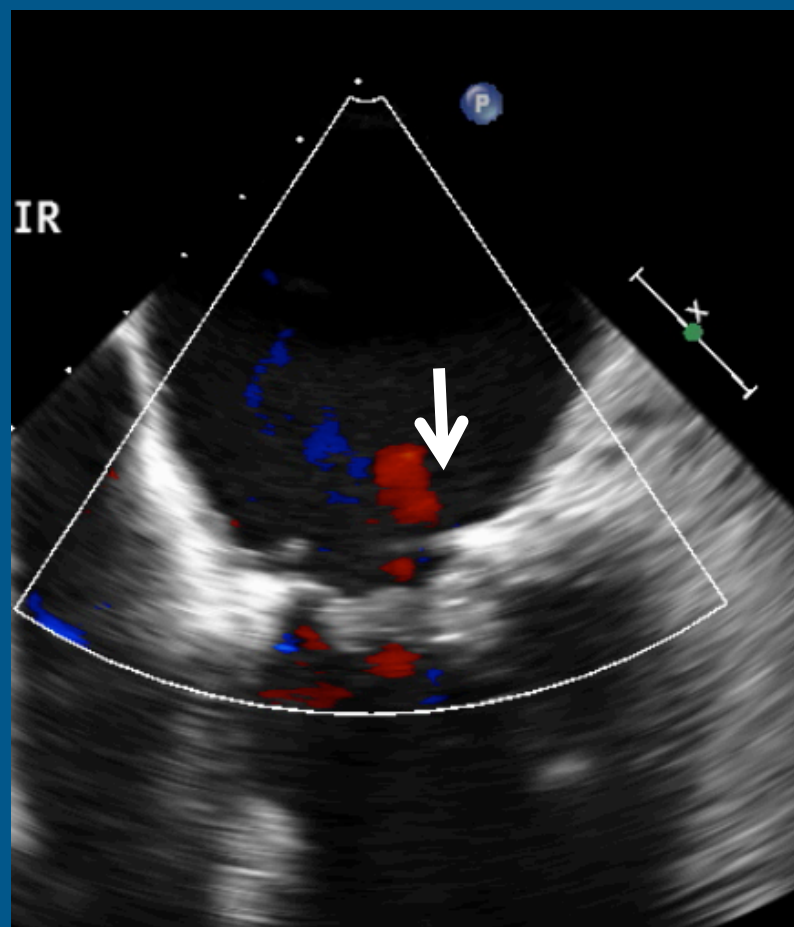
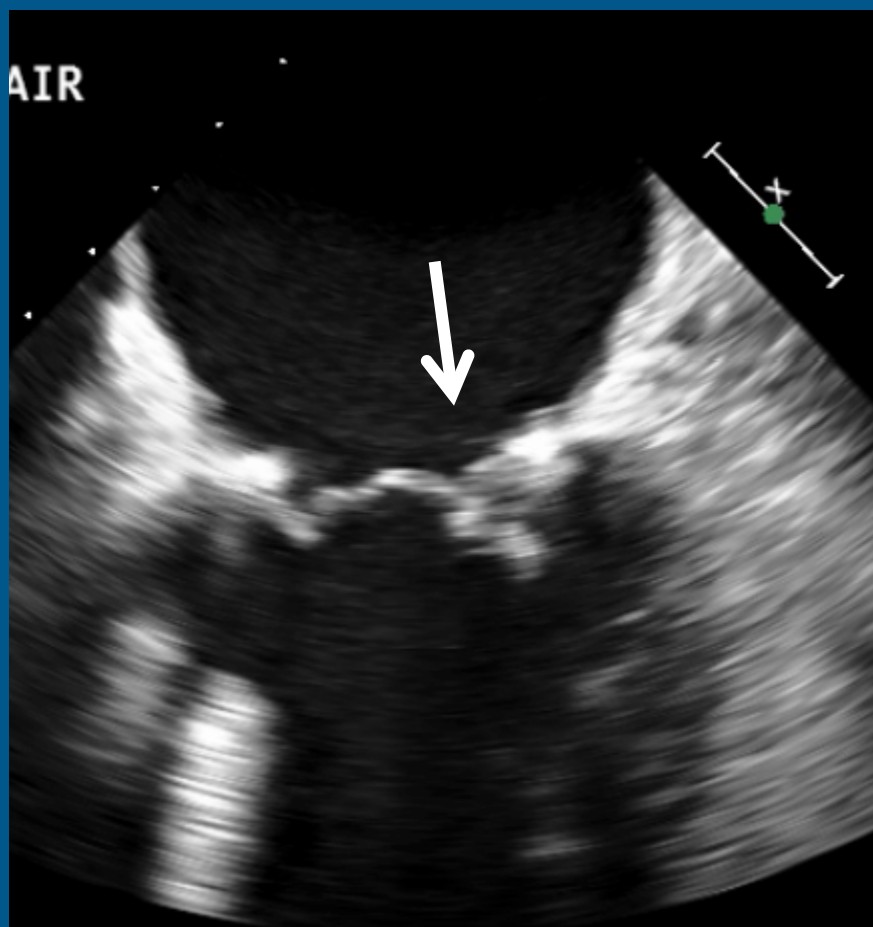


Postoperative 3D Echo Image After Minimally Invasive Mitral Valve Repair

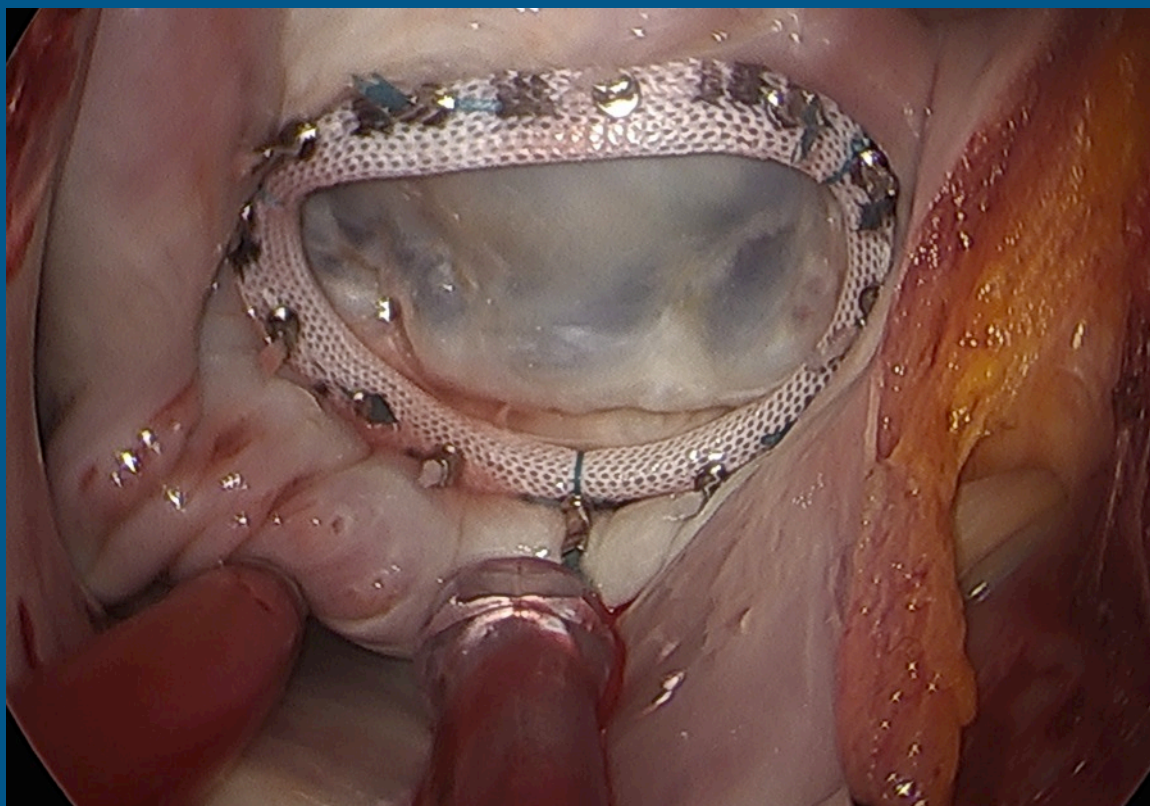


Postoperative Echo After Minimally Invasive Repair

(Showing good closure of mitral valve with no color flow into left atrium)



Minimally Invasive View of Mitral Valve After Repair Showing No Leak



Incision Site for Minimally Invasive Mitral Valve Repair



Patient 1: 3 weeks after surgery



Patient 2: 2 months after surgery