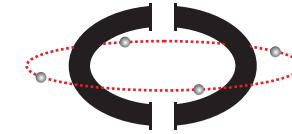


The University of Virginia School of Medicine
Molecular Imaging Core Laboratory

presents



**Practical PET Imaging
for Clinicians and Biologists
for Research and Patient Management**



2 October 2014

The University of Virginia
Jordan Hall Conference Center
Charlottesville, Virginia

COURSE DIRECTOR

Stuart S. Berr, PhD

KEYNOTE SPEAKER:

Eugene D. Kwon, MD

Professor of Urology and Immunology

Co-Director, Urology Research Program

Co-Director, Cancer Immunology & Immunotherapy Program

Mayo Comprehensive Cancer Center

Mayo Clinic

PROVIDERSHIP BY

The University of Virginia Office of Continuing Medical Education

Practical PET Imaging for Clinicians and Biologists

DESCRIPTION

This workshop will provide a practical introduction to positron emission tomography (PET) imaging. The basic physics and chemistry of PET will be presented, along with examples of its use in cancer, cardiovascular, and neurological research and patient management. The use of PET for diagnosis, staging, and treatment, in addition to monitoring of treatment will be discussed. Regulatory issues concerning the introduction of new PET imaging agents will be covered.

WHO SHOULD ATTEND

This course is designed for basic biological scientists that wish to use PET imaging in their research studies. It is also intended for clinician scientists that may wish to incorporate PET imaging into the clinical research studies, along with referring clinicians (referring physicians and radiologists) that want to use PET imaging for patient management. It will also be appropriate for technologists and others interested in using state of the art PET imaging technique. No prior knowledge of PET imaging is assumed.

OBJECTIVES

Attendees after completing this course should be able to:

- Discuss the role of PET imaging for following therapy.
- Describe the use of PET for diagnosing and staging cancer, cardiovascular disease, and neurological disorders.
- State what is involved in radiolabeling small molecules, peptides and proteins for use as PET imaging agents.
- Discuss the regulatory challenges that must be overcome to move a PET imaging agent from discovery to clinic.

No special educational preparation is required for this CME live activity

DIRECT PROVIDERSHIP ACCREDITATION AND DESIGNATION STATEMENT

The University of Virginia, School of Medicine is accredited by the Accreditation Council for Continuing Medical Education (ACCME) to provide continuing medical education for physicians.

The University of Virginia, School of Medicine designates this live activity for a maximum of 7.5 *AMA PRA Category 1 Credits*.™ Physicians should only claim credit commensurate with the extent of their participation in the activity.

HOURS OF PARTICIPATION STATEMENT

The University of Virginia, School of Medicine awards 7.5 hours of participation (equivalent to *AMA PRA Category 1 Credits*.™) to each non-physician participant who successfully completes the educational activity. The University of Virginia, School of Medicine maintains a permanent record of participation for six (6) years.

ATTENDANCE AND CERTIFICATE DISTRIBUTION

The University of Virginia Office of Continuing Medical Education requires that all participants at live CME activities sign attendance sheets daily to confirm participation in the CME activity for that day. Participants are responsible for accurately tracking their actual participation at live events.

ACCOMMODATIONS

Rooms have been reserved at the Courtyard by Marriott University/Medical Center (434-977-1700) and the Hampton Inn & Suites (434-923-8600) and will be available on a first come, first served basis. Attendees will need to make their own reservations with the group name, **2014 PET Molecular Imaging Workshop**. Hotel space is limited due to a football game going on the same weekend. Please make your reservation by September 1st, 2014.

COURSE LOCATION AND PARKING

This course will be held in the Jordan Hall Conference Center at the University of Virginia Health Sciences Center. The Jordan Hall Conference Center is located on Lane Road just off Jefferson Park Avenue.

Conference parking for activities at the UVA Health System is LIMITED to the 14th Street Parking Garage. The Medical Center garages are for patients ONLY. The CME office is unable to reimburse conference attendees for parking. To read more about Parking Information, please go to our website: www.cmevillage.com.

CONFIRMATION AND CANCELLATION POLICY

Upon receipt of registration and payment, you will receive an email confirmation. Registration fees will be refunded (less a \$50 administrative fee) for written cancellations (emails and faxed requests are acceptable) received a minimum of 14 days prior to the activity date. No refunds will be granted for registration fees of less than \$50 or for cancellations made within 13 days of the activity.

The University of Virginia, School of Medicine reserves the right to cancel CME activities if necessary. In this case, the entire registration fee will be refunded. All other expenses incurred in conjunction with this CME activity are the sole responsibility of the participant.

CONTACT INFORMATION

Please contact John A. Owen in the Office of Continuing Medical Education with any questions regarding this activity (phone: 434-924-5318; fax: 434-982-1415; email: jao2b@virginia.edu)

SPECIAL NEEDS

The Americans with Disabilities Act of 1990 requires that all individuals, regardless of their disabilities, have equal access. The Office of Continuing Medical Education at the University Of Virginia School Of Medicine is pleased to assist participants with special needs. Written requests must be received 30 days prior to the conference date. These should be mailed to UVA Office of Continuing Medical Education, Box 800711, Charlottesville, VA 22908 or to uvacme@virginia.edu. Some of the conference venues used by the University of Virginia Office of Continuing Medical Education are registered historic properties and may not be fully ADA accessible. Please feel free to contact the facility if you have specific questions.

REGISTRATION

Please visit our website, www.cmevillage.com to register for this conference online. Registration will be available online only. The registration fee covers syllabus materials, breakfast, lunch, break, and Thursday reception.

Registration Fees	Prior to 9/20/2014	Effective 9/20/2014
Physicians	\$300	\$350
Faculty and other healthcare professionals	\$200	\$250
Residents/Fellows/Students	\$50	\$100

DISCLOSURE STATEMENTS

Disclosure of faculty financial affiliations

The University of Virginia School of Medicine, as an ACCME accredited provider, endorses and strives to comply with the Accreditation Council for Continuing Medical Education (ACCME) Standards of Commercial Support, Commonwealth of Virginia statutes, University of Virginia policies and procedures, and associated federal and private regulations and guidelines on the need for disclosure and monitoring of proprietary and financial interests that may affect the scientific integrity and balance of content delivered in continuing medical education activities under our auspices.

The University of Virginia School of Medicine requires that all CME activities accredited through this institution be developed independently and be scientifically rigorous, balanced and objective in the presentation/discussion of its content, theories and practices.

All faculty presenters participating in an accredited CME activity are expected to disclose relevant financial relationships with commercial entities occurring within the past 12 months (such as grants or research support, employee, consultant, stock holder, member of speakers' bureau, etc.). The University of Virginia School of Medicine will employ appropriate mechanisms to resolve potential conflicts of interest to maintain the standards of fair and balanced education to the reader. Questions about specific strategies can be directed to the Office of Continuing Medical Education, University of Virginia School of Medicine, Charlottesville, Virginia.

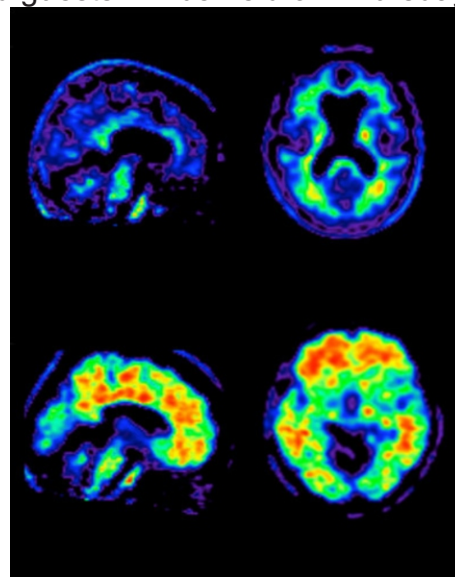
The faculty and staff of the University of Virginia Office of Continuing Medical Education have no financial affiliations to disclose.

Disclosure of discussion of non-FDA approved uses for pharmaceutical products and/or medical devices:

The University of Virginia School of Medicine, as an ACCME provider, requires that all faculty presenters identify and disclose any off-label uses for pharmaceutical and medical device products. The University of Virginia School of Medicine recommends that each physician fully review all the available data on new products or procedures prior to clinical use.

SOCIAL PROGRAM

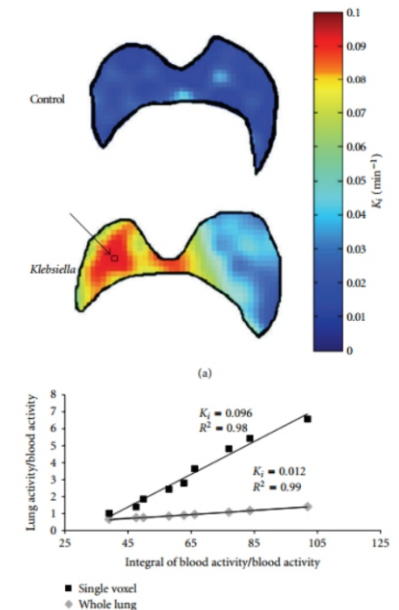
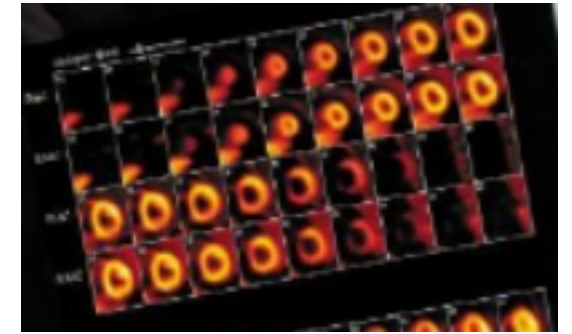
A reception for attendees and guests will be held on Thursday, October 2, 2014 at 6:00 p.m.



AGENDA

Thursday, October 2, 2014

- 7:30 Registration and Breakfast
- 8:00 Introduction
Stuart S. Berr, PhD
- 8:30 Cardiac PET Imaging
Jamieson Bourque, MD
- 9:00 Imaging Sarcoidosis and Sympathetic Imaging of Heart
Albert J. Sinusas, MD
- 9:30 Traumatic Brain Injury
James Stone, MD, PhD
- 10:00 Break
- 10:30 Alzheimer's Disease
Steven T. DeKosky, MD
- 11:00 Regulatory Issues
Henry F. Van Brocklin, PhD
- 12:00 Lunch
- 1:00 Discovery and Development of novel imaging agents
Kimberly Kelly, PhD
- 1:30 Radiolabeling of Peptides and Antibodies
Zibo Li, PhD
- 2:00 Immune Cell Imaging
Sundaresan Gobalakrishnan, PhD
- 2:30 Low molecular weight agent 18F/11C/click chemistry
Ron C. Mease, PhD
- 3:00 Kinetic Modeling
Bijoy Kundu, PhD
- 3:30 Break
- 4:00 Molecular Imaging Probes for Cancer
Sridhar Nimmagadda, PhD
- 4:30 Molecular PET Imaging in Radiobiology of Solid Tumors
Ross Mikkelsen, PhD
- 5:00 Radioactive Choline imaging of Prostate Cancer
Eugene Kwon, MD
- 6:00 Reception



FACULTY

GUEST FACULTY

Eugene D. Kwon, MD
Professor of Immunology
Professor of Urology
Mayo Clinic

Sundaresan Gobalakrishnan, PhD
Head of Multi-modality Imaging Laboratory and
Scientific Manager of Center of Molecular Imaging
Virginia Commonwealth University

Zibo Li, PhD
Associate Professor, RadioChemist
University of North Carolina, Chapel Hill

Ron C. Mease, PhD
Associate Professor
Johns Hopkins University

Ross Mikkelsen, PhD
Professor, Division Head
Radiation Oncology
Molecular Radiobiology
Virginia Commonwealth University

Sridhar Nimmagadda, PhD
Associate Professor of Radiology, Medicine and Oncology
Johns Hopkins University

Albert J. Sinusas, MD
Professor of Medicine (Cardiology)
and of Diagnostic Radiology
Director, Translational Research Imaging Center
Director, Cardiovascular Imaging
Yale University

Henry F. Van Brocklin, PhD
Professor, Department of Radiology
Director of Radiopharmaceutical Research
University of California, San Francisco

UNIVERSITY OF VIRGINIA FACULTY

Stuart S. Berr, PhD
Professor of Research
Radiology and Medical Imaging and Biomedical Engineering
Director of the UVa Molecular Imaging Core Laboratory

Jamieson M. Bourque, MD, MHS
Assistant Professor of Medicine, Cardiovascular Medicine

Steven T. DeKosky, MD
Professor of Neurology
Former Dean of the UVa School of Medicine

Kimberly Kelly, PhD
Associate Professor of Biomedical Engineering

Bijoy Kundu, PhD
Assistant Professor of Radiology and Medical Imaging

James R. Stone, MD, PhD
Assistant Professor Radiology and Medical Imaging

WORKSHOP ORGANIZERS

Stuart S. Berr, PhD
Professor of Research
Radiology and Biomedical Engineering
University of Virginia

Jiang He, PhD
Associate Professor of Radiology
University of Virginia

Kim Kelly, PhD
Associate Professor of Biomedical Engineering
University of Virginia

Sridhar Nimmagadda, PhD
Associate Professor of Radiology
Johns Hopkins University

Jamal Zweit, Ph.D.
Professor of Radiology
Director, Molecular Imaging Center
Virginia Commonwealth University