

UVA Pulmonary Embolism Response Team

Who We Are

Our pulmonary embolism response team is an on-call, multidisciplinary team of attending physicians. We are available 24 hours a day, 365 days a year, to emergently manage complex, high-risk pulmonary embolisms.

Our highly skilled team includes members from the following departments:

- Pulmonary and critical care medicine
- Vascular medicine
- Cardiology
- Interventional radiology
- Cardiac surgery
- Clinical pharmacy
- Hematology, high-risk OB and other specialties when needed

About Pulmonary Embolism

Patients with submassive and massive pulmonary embolism can have between 15-50 percent 30-day mortality with anticoagulation alone. Additional endovascular or surgical procedures provided in a timely fashion can be life-saving.

When to Call

Call us if you have a patient with CT-confirmed pulmonary embolism with any of the following

Three H's:

- Hypotension
- Severe hypoxia
- Severe right heart strain on CT or echocardiogram

Please order these tests before referring, unless already done:

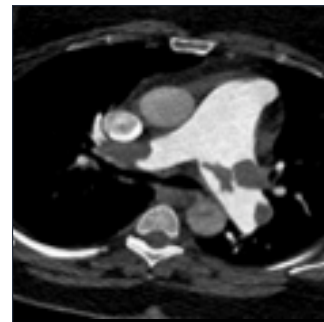
- Echocardiogram
- CBC, PT/PTT and creatinine
- Troponin and BNP

What We Offer

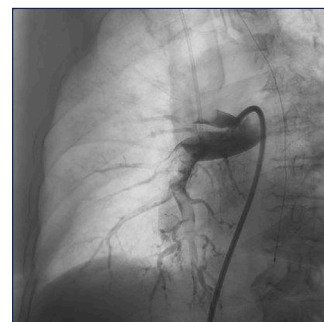
Our team offers expertise in a variety of procedures, including:

- Catheter-directed thrombolysis and complex thrombectomies
- IVC filter placements
- Extracorporeal membrane oxygenation (ECMO)
- Surgical thrombectomies
- Systemic lysis
- Longitudinal follow-up in our specialized PE clinic to monitor recovery

Our PE response team system puts referring physicians in touch with a UVA pulmonary embolism triage officer (the attending cardiovascular or critical care physician) any time, day or night. The PE triage officer makes recommendations, coordinates care within our multidisciplinary team and arranges for transfer, if indicated.



Acute main pulmonary artery embolism



Catheter-directed thrombolysis



Surgically removed pulmonary embolus

How To Refer

For a consult on a PE patient, call the **UVA Transfer Center** at **844.XFERUVA (933.7882)** and ask for the PE triage officer on call.